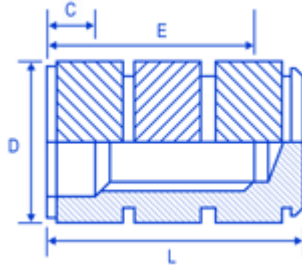
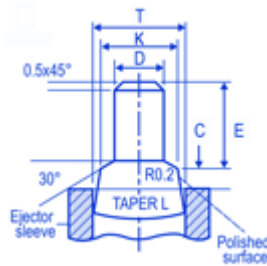


## BLD: 3

### FSUK-BLD



### Mould Pin



## Description

The FSUK BLD range is a blind insert designed for moulding in rather than post insertion. The opposing herringbone knurl gives a very high level of performance. The location pin should be designed as per our dimensions to ensure the insert locates correctly during the moulding process.

## Dimensions

| thread | C   | D    | E    | L    |
|--------|-----|------|------|------|
| M2     | 1.2 | 3.4  | 3.6  | 5.5  |
| M3     | 1.3 | 4.7  | 4.6  | 7.3  |
| M4     | 1.8 | 6.3  | 6.7  | 10.2 |
| M5     | 2.0 | 7.3  | 7.4  | 11.2 |
| M6     | 2.0 | 9.8  | 8.1  | 14.4 |
| M8     | 2.3 | 11.4 | 11.1 | 16.5 |

## Advantages

BLIND ENDED TO AVOID ANY PLASTIC ENTERING THE INTERNAL THREAD CAN BE INSTALLED INTO VERY LARGE MOULDINGS VERY HIGH LEVEL OF PERFORMANCE FREE RUNNING THREAD MOST SIZES EX STOCK

## Comments

MOULD PIN DESIGN IS CRITICAL TO THE SUCCESS OF THE MOULDING-IN OPERATIONS, SINCE THE FEATURES SHOWN ARE USED TO LOCATE AND RETAIN THE INSERT PRIOR TO MOULDING AND PREVENT THE INGRESS OF PLASTIC DURING THE PROCESS HOW TO SPECIFY: FSUK BLD B M5 ONLY AVAILABLE IN BRASS ALL STOCK SIZES