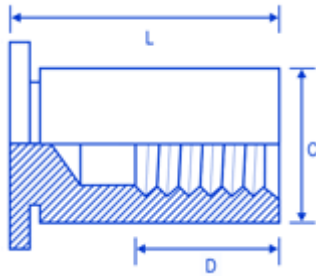
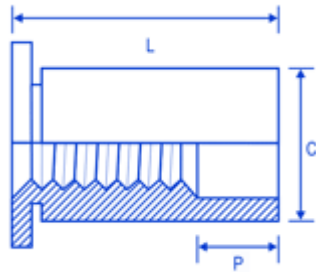


STAND-OFFS: 5

FSUK-BLIND



FSUK-THROUGH



Dimensions

thread	C	D	P	L	H A/F	holesize	sheet thickness	min dis**
M2.5	4.18	L6-	L12-	5-	4.8	4.2	1.0 (min)	6.0
		12Max	14=4.8					
		L14-	L16-					
		16=6.4	20=8					
		18-	L22-					
M3	4.18	L6-	L12-	5-	4.8	4.2	1.0 (min)	6.0
		12Max	14=4.8					
		L14-	L16-					
		16=6.4	20=8					
		18-	L22-					
M3 (5.4)	5.39	L6-	L12-	5-	6.4	5.4	1.0 (min)	6.8
		12Max	14=4.8					
		L14-	L16-					
		16=6.4	20=8					
		18-	L22-					
M4	7.10	L6-	L12-	6-	7.9	7.2	1.3 (min)	8.0
		12Max	14=4.8					
		L14-	L16-					
		16=6.4	20=8					
		18-	L22-					
M5	7.10	L6-	L12-	6-	7.9	7.2	1.3 (min)	8.0
		12Max	14=4.8					
		L14-	L16-					
		16=6.4	20=8					
		18-	L22-					
		26=9.5	26=11					

Cross Flat



Description

The FSUK Stand-Offs are designed to serve as spacers normally to mount a PCB board in enclosures. They are available in a Blind or Through version and can be supplied in steel or stainless. The steel version are hardened and designed to go into sheet less than 80 Rockwell B, the stainless version is designed to go into less than 70 Rockwell B. They are designed to be installed into drilled or punched holes and must always be installed using a squeeze action. The tolerance on the hole must be $-0.00 + 0.08\text{mm}$.

Advantages

DESIGNED TO BE FLUSH ON ONE SIDE OF SHEET METAL OFFERED IN A WIDE RANGE OF LENGTHS SUITABLE FOR ALL THICKNESS OF SHEET OVER 1.0MM AVAILABLE IN THROUGH AND BLIND VERSIONS STEEL OR STAINLESS STEEL

Comments

HOW TO SPECIFY FSUK BLD M4-12-S-TRIVALENT= M4-12 BLIND STEEL TRIVALENT PLATED FSUK THROUGH M4-12 S-TRIVALENT= M4-12 THROUGH STEEL TRIVALENT PLATED ALSO AVAILABLE IN STAINLESS AND SOME SIZES IN GRADE 400 STAINLESS PLEASE CHECK WITH FSUK FOR AVAILABILITY OF STAINLESS/GRADE 400 PLEASE NOTE LENGTH (L) STARTS AT 6MM ON FSUK-BLIND