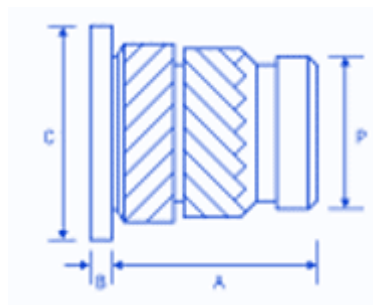
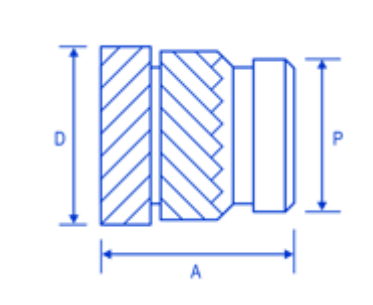


## HISH: 1

### FSUK-HISH



### FSUK-HIS



## Description

The HIS range of inserts has been developed with an opposing herringbone knurl on the outside to give a high level of performance in most Thermoplastics. This insert is available in a headed version to increase performance and aid with electrical contacts. It's designed to be installed into drilled or moulded holes using either direct heat or ultrasonic. The insert is designed with a pilot end to aid insertion.

## Dimensions

thread	A	B	C	D	P	holesize (+0.1mm-0.0)	wall thickness
M2	4.0	0.53	4.8	3.6	3.1	3,2	1.3
M2.5	5.7	0.61	5.5	4.6	3.9	4.0	1.6
M3	5.7	0.61	5.5	4.6	3.9	4,0	1.6
M3.5	7.1	0.76	6.4	5.4	4.7	4.8	1.8
M4	8.2	0.91	7.1	6.3	5.5	5.6	2.1
M5	9.5	1.09	7.9	7.1	6.3	6.4	2.6
M6	12.7	1.35	9.5	8.7	7.9	8.0	3.3
M8	12.7	1.35	11.1	10.2	9.5	9.6	4.5
M10	12.7	1.35	14.0	12.3	11.6	11.7	6.0

## Advantages

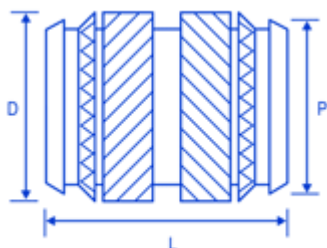
HIGH TORQUE AND PULL OUT SUITABLE FOR THIN BOSS WALLS TO MAXIMISE DESIGN SPACE HEADED VERSION FOR ELECTRICAL CONTACT AND HIGHER PERFORMANCE

## Comments

DESIGN ALLOWS RAPID INSTALLATION USING HEAT OR ULTRASONICS NOW STOCKING NON STANDARD LENGTHS IN M3 UP TO M6 AND MALE THREADED VERSIONS EXAMPLE DESIGNATION : FSUK HIS-B-M3 UNHEADED FSUK HISH B M3 HEADED VERSION PLEASE NOTE HOLE SIZES APPLY TO THE POINT REACHED AT THE BOTTOM OF THE INSERT AVAILABLE IN BRASS + SOME SIZES IN STAINLESS MOST SIZES AVAILABLE FROM STOCK CONTACT FSUK FOR FURTHER INFO

## DUO: 1

### FSUK-DUO



## Dimensions

thread	D	P	L	holesize (+0.1mm-0.0)	wall thickness
M2	3.5	3.1	3.9	3.2	1.3
M2.5	4.4	3.9	5.7	4.0	1.6
M3	4.4	3.9	5.7	4.0	1.6
M3.5	5.2	4.7	7.1	4.8	1.8
M4	6.1	5.5	8.1	5.6	2.1
M5	6.8	6.3	9.5	6.4	2.6
M6	8.5	7.9	12.7	8.0	3.3
M8	10.0	9.5	12.7	9.6	4.5
M10	12.3	11.8	12.7	11.9	6.0

## Description

The Duo range is based on a opposing herringbone knurl with the advantage of it being symmetrical. It's designed to be installed into drilled or moulded holes using direct heat. (Not Ultrasonics)

## Advantages

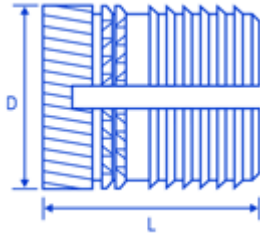
HIGH TORQUE AND PULL OUT SUITABLE FOR THIN BOSS WALLS TO MAXIMISE DESIGN SPACE DESIGN ALLOWS RAPID INSTALLATION USING HEAT AVAILABLE IN SHORTER LENGTHS SYMMETRICAL TO AID WITH INSTALLATION

## Comments

EXAMPLE DESIGNATION: FSUK DUO B M3 M3 BRASS  
VERSION PLEASE NOTE HOLE SIZES APPLY TO THE POINT REACHED AT THE BOTTOM OF THE INSERT ONLY AVAILABLE IN BRASS MOST SIZES EX STOCK

## EXPP: 1

### FSUK-EXPP



## Description

The FSUK EXPP insert is a high-performance press in insert designed for Thermoplastics. It's designed to be pressed in cold into drilled or moulded holes. The insert has an anti vibration feature but without the high installation torque required with the EXP range.

## Dimensions

thread	D	L	holesize (+0.1mm-0.0)	wall thickness
M2	3.7	4.0	3.2	1.6
M2.5	4.5	5.8	4.0	2.0
M3	4.5	5.8	4.0	2.0
M4	6.2	8.2	5.6	2.8
M5	6.9	9.5	6.4	3.2
M6	8.5	12.7	8.0	4.0
M8	10.1	12.7	9.6	4.8

## Advantages

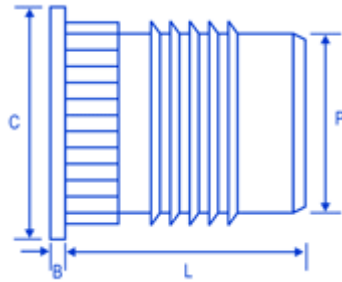
FAST AND EASY TO INSTALL WITHOUT THE NEED FOR HEAT  
HIGH PERFORMANCE SUITABLE FOR THE MAJORITY OF  
THERMOPLASTIC

## Comments

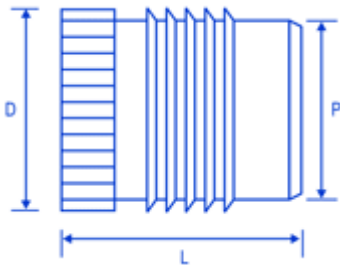
PLEASE NOTE HOLE SIZES APPLY TO THE POINT REACHED AT  
THE BOTTOM OF THE INSERT EXAMPLE DESIGNATION: FSUK  
EXPP B M3

PUH: 1

FSUK-PUH



FSUK-PU



### Dimensions

thread	B	C	D	P	L	holesize (+0.1mm-0.0)	wall thickness
M2	0.45	4.8	3.7	3.1	4.0	3.2	1.6
M2.5	0.58	5.5	4.5	3.9	4.8	4.0	2.0
M3	0.58	5.5	4.5	3.9	4.8	4.0	2.0
M3.5	0.74	6.4	5.3	4.7	6.4	4.8	2.4
M4	0.89	7.1	6.1	5.5	7.9	5.6	2.8
M5	1.07	7.9	7.0	6.3	9.5	6.4	3.2
M6	1.32	9.5	8.6	7.9	12.7	8.0	4.0
M8	1.32	11.0	10.2	9.5	12.7	9.6	4.8

### Advantages

FAST AND EASY TO INSTALL WITHOUT THE NEED FOR HEAT  
HIGH PERFORMANCE SUITABLE FOR THE MAJORITY OF  
THERMOPLASTICS FREE RUNNING THREAD HEADED VERSION  
FOR ELECTRICAL CONTACT AND HIGHER PERFORMANCE

### Comments

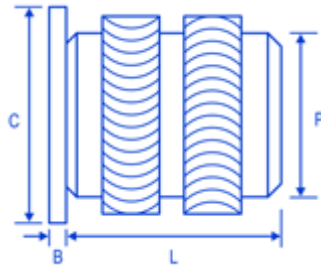
PLEASE NOTE HOLE SIZES APPLY TO THE POINT REACHED AT  
THE BOTTOM OF THE INSERT

### Description

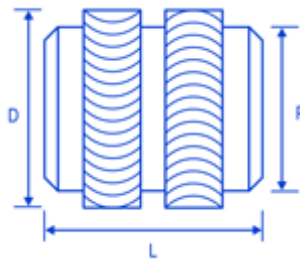
The FSUK PU insert is cold press in insert which is designed with a free running thread and will suit most types of Thermoplastics. It's designed to be pressed in cold into drilled or moulded holes and due to its combination of fins and knurls can achieve a high performance.

## HIHLH: 1

### FSUK-HIHLH



### FSUK-HIHL



## Description

The HIHL range has been designed with a rounded crest and knurl configuration to be installed into Notch Sensitive Plastics such as 30% Glass Filled Polycarbonate. This insert reduces the stress and is available in a headed version to increase performance and aid with electrical contacts. It's designed to be installed into drilled or moulded holes using direct heat and reduces the risks associated with cracking.

## Dimensions

thread	B	C	D	P	L	holesize (+0.1mm-0.0)	wall thickness
M2	0.51	4.8	3.5	3.1	3.9	3.2	1.4
M2.5	0.58	5.5	4.4	3.9	5.8	4.0	1.8
M3	0.58	5.5	4.4	3.9	5.8	4.0	1.8
M3.5	0.74	6.4	5.2	4.7	7.1	4.8	2.1
M4	0.89	7.1	6.1	5.5	8.1	5.6	2.4
M5	1.07	7.9	6.9	6.3	9.5	6.4	2.8
M6	1.32	9.5	8.5	7.9	12.7	8.0	3.6
M8	1.32	11.1	10.0	9.5	12.7	9.6	5.0

## Advantages

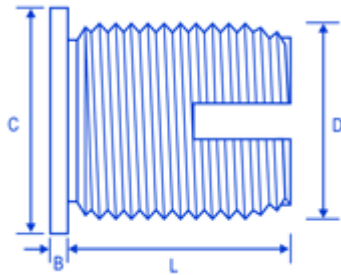
SYMMETRICAL TO AID WITH INSTALLATION DESIGNED TO REDUCE STRESS FOR USING WITH AMORPHOUS PLASTICS  
HEADED VERSION FOR ELECTRICAL CONTACT AND HIGHER PERFORMANCE

## Comments

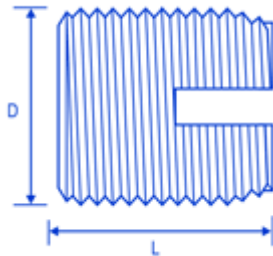
PLEASE NOTE HOLE SIZES APPLY TO THE POINT REACHED AT THE BOTTOM OF THE INSERT  
EXAMPLE DESIGNATION: FSUK HIHL B M3 UNHEADED M3  
FSUK HIHLH B M3 HEADED M3  
ONLY AVAILABLE IN BRASS

## SCRH: 1

### FSUK-SCRH



### FSUK-SCR



## Description

The SCR range is a self tapping range of inserts with internal and external threads and a slot to aid installation. It's designed to be installed into drilled or moulded holes and can be used where maximum strength is required.

## Dimensions

thread	B	C	D	L	holesize	holesize 2
M2.5	0.58	6.0	4.5	6.0	4.0 - 4.1	4.1 - 4.3
M3	0.58	6.5	5.0	6.0	4.5 - 4.6	4.6 - 4.8
M3.5	0.73	7.5	6.0	8.0	5.3 - 5.4	5.5 - 5.7
M4	0.89	8.0	6.5	8.0	5.8 - 5.9	6.0 - 6.2
M5	1.06	9.5	8.0	10.0	7.1 - 7.2	7.3 - 7.6
M6	1.32	12.0	10.0	14.0	8.6 - 8.8	9.0 - 9.4
M8	1.32	14.0	12.0	15.0	10.6 - 10.8	11.0 - 11.4
M10	1.57	16.0	14.0	18.0	12.6 - 12.8	13.0 - 13.4

## Advantages

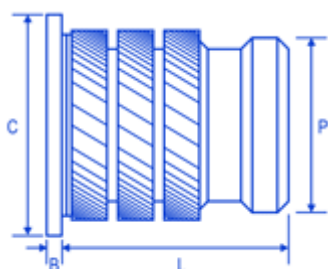
HIGH PULL OUT RESISTANCE HEADED VERSION FOR ELECTRICAL CONTACT AND HIGHER PERFORMANCE CAN BE USED IN MOST TYPES OF MATERIALS AVAILABLE IN HARDENED STEEL AND STAINLESS

## Comments

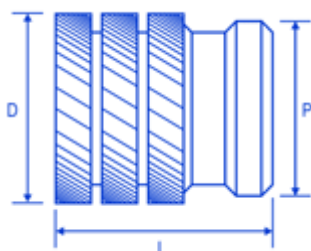
EXAMPLE DESIGNATION FSUK SCR B M3 FSUK SCRH B M3 (HEADED) AVAILABLE IN BRASS HARDENED STEEL AND STAINLESS STEEL PLEASE NOTE HOLE SIZE 1 IS A GUIDE FOR THERMOPLASTICS AND HOLESIZE 2 IS A GUIDE FOR THERMOSETTING PLASTICS CONTACT FSUK FOR FURTHER INFO IF REQUIRED PLEASE NOTE THAT THE WALL THICKNESS WOULD BE TYPICALLY MINIMUM 0.3 X D ON THE SCR THE SCRH RANGE STARTS FROM THREAD SIZE M4

## MUH: 2

### FSUK-MUH



### FSUK-MU



## Description

The FSUK MU range is designed with multiple helically knurled rings designed to be installed into hard brittle Thermosetting Plastics. These inserts are often used in the Electrical industry. It's designed to be installed cold into drilled or moulded holes. The sharp knurls allows high performance in thinner boses.

## Dimensions

thread	B	C	D	P	L	holesize (+0.1mm-0.0)	wall thickness
M2	0.51	4.8	3.3	3.0	4.1	3.1	1.6
M2.5	0.58	5.5	4.2	3.7	5.3	3.8	2.0
M3	0.58	5.5	4.2	3.7	5.3	3.8	2.0
M3.5	0.74	6.4	5.0	4.5	6.3	4.6	2.5
M4	0.80	7.1	5.8	5.3	7.4	5.4	2.5
M5	1.07	7.9	6.6	6.1	8.3	6.2	2.5
M6	1.32	9.5	8.2	7.7	9.2	7.8	2.8
M8	1.32	11.1	9.7	9.3	9.2	9.3	3.8
M10	1.57	14.0	12.0	11.5	9.2	11.6	5.0

## Advantages

FAST AND EASY TO INSTALL A SPECIAL PILOT END PREVENTS INSTALLATION PROBLEMS RELATIVELY SMALL DIAMETER AND LENGTH HEADED VERSION FOR ELECTRICAL CONTACT AND HIGHER PERFORMANCE HIGH TORQUE RESISTANCE

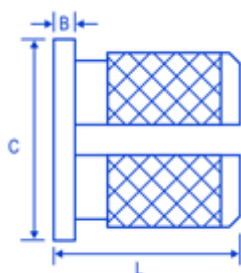
## Comments

PLEASE NOTE HOLE SIZES APPLY TO THE POINT REACHED AT THE BOTTOM OF THE INSERT EXAMPLE DESIGNATION: FSUK MU B M3 SOME SIZES AVAILABLE IN STAINLESS

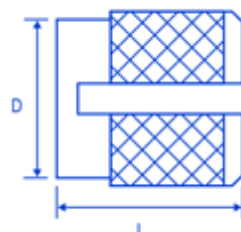


## EXPH: 2

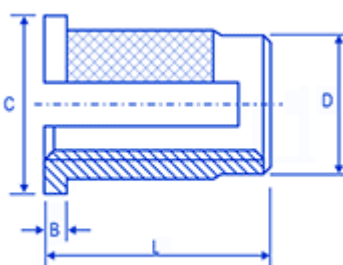
### FSUK-EXPH



### FSUK-EXP



### FSUK-EXPR



## Dimensions

thread	B	C	D	L	holesize (+0.1mm-0.0)	wall thickness
M2	0.43	4.8	3.2	3.9	3.2	2.4
M2.5	0.51	5.5	4.0	4.7	4.0	3.2
M3	0.51	5.5	4.0	4.7	4.0	3.2
M3.5	0.66	6.4	4.7	6.3	4.8	3.6
M4	0.82	7.1	5.5	7.9	5.6	4.0
M5	0.99	7.9	6.3	9.4	6.4	4.8
M6	1.25	9.5	7.9	12.6	8.0	6.0
M8	1.25	11.1	9.5	12.6	9.6	7.0

## Advantages

FAST AND EASY TO INSTALL SCREW IS SECURED  
AUTOMATICALLY AGAINST LOOSENING HEADED AND  
REVERSE HEAD AVAILABLE TO ENABLE THE INSERT TO GO ON  
THE BACK OF THE MOULDING

## Comments

EXAMPLE DESIGNATION: FSUK EXP B M4= M4 BRASS FLUSH  
EXPANSION INSERT FSUK EXPH-B-M4 M4 BRASS HEADED  
VERSION FSUK EXPR B M4 M4 REVERSE TYPE EXPANSION  
INSERT PLEASE NOTE HOLE SIZES APPLY TO THE POINT  
REACHED AT THE BOTTOM OF THE INSERT ONLY AVAILABLE  
IN BRASS MOST SIZES AVAILABLE FROM STOCK

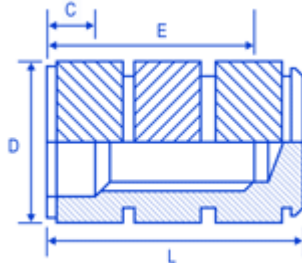
## Description

The FSUK EXP range is designed around a diamond knurl configuration with a slot which enables the insert to expand when the mating screw is assembled. This insert is designed more for Thermosetting Plastics although can be used in some Thermoplastics. Available in a headed and reverse head; it is designed with an anti-vibration feature to stop the screw working loose after assembly. It's designed to be pressed in cold into drilled or moulded holes.

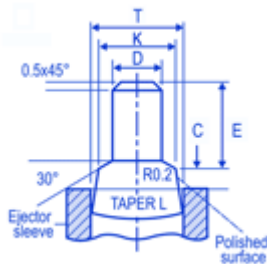


## BLD: 3

### FSUK-BLD



### Mould Pin



## Description

The FSUK BLD range is a blind insert designed for moulding in rather than post insertion. The opposing herringbone knurl gives a very high level of performance. The location pin should be designed as per our dimensions to ensure the insert locates correctly during the moulding process.

## Dimensions

thread	C	D	E	L
M2	1.2	3.4	3.6	5.5
M3	1.3	4.7	4.6	7.3
M4	1.8	6.3	6.7	10.2
M5	2.0	7.3	7.4	11.2
M6	2.0	9.8	8.1	14.4
M8	2.3	11.4	11.1	16.5

## Advantages

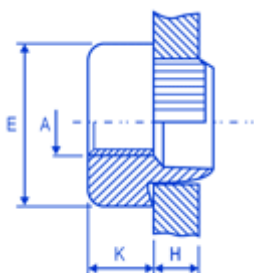
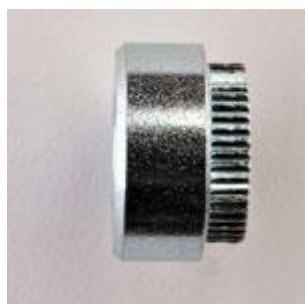
BLIND ENDED TO AVOID ANY PLASTIC ENTERING THE INTERNAL THREAD CAN BE INSTALLED INTO VERY LARGE MOULDINGS VERY HIGH LEVEL OF PERFORMANCE FREE RUNNING THREAD MOST SIZES EX STOCK

## Comments

MOULD PIN DESIGN IS CRITICAL TO THE SUCCESS OF THE MOULDING-IN OPERATIONS, SINCE THE FEATURES SHOWN ARE USED TO LOCATE AND RETAIN THE INSERT PRIOR TO MOULDING AND PREVENT THE INGRESS OF PLASTIC DURING THE PROCESS HOW TO SPECIFY: FSUK BLD B M5 ONLY AVAILABLE IN BRASS ALL STOCK SIZES

## FSUK-ANCHOR: 4

### FSUK-ANCHOR



## Description

The FSUK Anchor rivet bush is designed with serrations on the spigot and can be used in material as thin as 0.5mm up to 5.9mm. The spigot is designed to go through the sheet and be riveted over on the back allowing it to go into all types of material. They are generally available in Steel Self Colour or Zinc and Clear Pass(C3) and Stainless Steel. It is designed to be installed into drilled or punched holes. Please note stock sizes are M3-M10

## Dimensions

thread	E	K	holesize
M2	8.0	2.3	5.9
M2.5	8.0	3.2	5.9
M3	8.0	3.2	5.9
M3.5	9.5	3.8	7.0
M4	9.5	3.8	7.0
M5	11	4.4	8.35
M6	12.5	5.7	9.65
M8	16.0	6.4	13.1
M10	19.0	7.6	15.5
M12	25.4	10.2	19.6
M14	25.4	10.2	19.6
M16	25.4	10.2	19.5

## Advantages

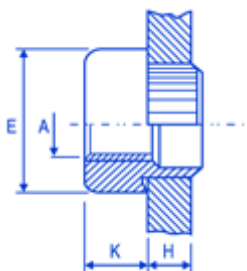
CAN BE INSTALLED MANUALLY OR WITH AN AUTO-FEED PRESS VERY HIGH PERFORMANCE DUE TO ITS RIVETING ACTION ON THE BACK OF THE SHEET METAL SUITABLE FOR USE IN DRILLED OR PUNCHED HOLES

## Comments

HOW TO SPECIFY: FSUK ANCHOR M4 1.6mm S-Z FOR EACH SIZE JUST SPECIFY THE MATERIAL THICKNESS (H) S= STEEL STST= STAINLESS SC= SELF COLOUR SPECIFY Z FOR ZINC PLATED (TRIVALENT C3) AT THE END OF PART NO Hole Size tolerance is -0/+0.1mm

## FSUK-MINI-ANCHOR: 4

### FSUK-MINIANCHOR



## Dimensions

thread	E	K	holesize
M2	5.0	2.3	3.5
M2.5	5.5	2.8	4,3
M3	5.5	2.8	4,3
M3.5	7.0	3.2	5.5
M4	7.0	3.2	5.5
M5	8.5	3.8	6.5
M6	10	5.1	7.7
M8	12	6.5	9.7

## Description

The FSUK Mini-Anchor range has all the features of the standard Anchor but with a smaller body and panel range. The spigot is designed to go through the sheet and be riveted over on the back allowing it to go into all types of material. They are generally available in Steel Self colour or Zinc and Clear Pass and Stainless Steel. The Mini bushes are designed to be almost flush on the back of the sheet and can be installed into material between 0.5mm-3mm. It is designed to be installed into drilled or punched holes.

## Advantages

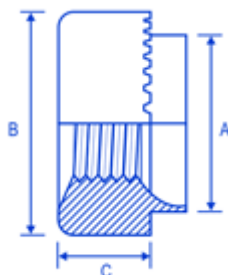
CAN BE INSTALLED MANUALLY OR WITH AN AUTO FEED PRESS SUITABLE FOR USE IN DRILLED OR PUNCHED HOLES  
CAN BE INSTALLED CLOSE TO THE PANEL EDGE  
SMALLER BODY GIVES MORE DESIGN SPACE

## Comments

HOW TO SPECIFY: FSUK MINI-ANCHOR M4-1.6mm-S-Z  
SPECIFY MATERIAL THICKNESS (H) AND ANCHOR MATERIAL  
THEN FINISH AVAILABLE IN SELF COLOUR, STEEL ZINC & TRIVALENT AND STAINLESS M3&M4 AVAILABLE IN MOST GUAGE SIZES FROM STOCK

## SERRATED: 4

### FSUK-SERRATED



## Description

The FSUK serrated face bush is offered as an alternative to the Serrated spigot and has a range of different hole sizes to give designers and sheet metal sub contractors a choice. The spigot is designed to go through the sheet and be rivetted over on the back allowing it to go into all types of material. They are generally available in Steel Self Colour or Zinc and Clear Pass and Stainless Steel. The FSUK Serrated face rivet bush can be used in material as thin as 0.5mm up to 5.9mm. It is designed to be installed into drilled or punched holes.

## Dimensions

thread	A	B	C	holesize
M2.5	5.54	7.92	3.17	5.54
M3	5.54	7.92	3.17	5.54
M3.5	6.73	9.52	3.17	6.73
M4	6.73	9.52	3.17	6.73
M5	7.92	11.10	3.81	7.92
M6	9.52	12.70	5.08	9.52
M8	12.70	15.87	6.35	12.70
M10	15.87	19.05	7.62	15.87
M12	19.05	25.40	10.16	19.05

## Advantages

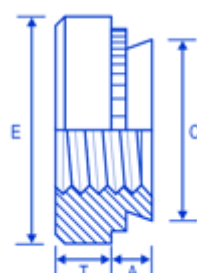
CAN BE INSTALLED MANUALLY OR WITH AN AUTO-FEED PRESS VERY HIGH PERFORMANCE DUE TO ITS RIVETING ACTION ON THE BACK OF THE SHEET METAL SUITABLE FOR USE IN DRILLED OR PUNCHED HOLES

## Comments

HOW TO SPECIFY FSUK M4-16 SWG SERR STEEL TRIVALENT Specify gauge size fastener is fixing into and then material of Rivet Bush. Available in Self Colour, Steel or Stainless. Also available with Serrations on Spigot. Please note Dimension A tolerance is +0/-0.2mm. Hole size tolerance is -0/+0.1mm and we recommend you punch or drill the hole towards the top limit.

SCN: 5

FSUK-SCN



## Description

The FSUK Self-Clinch nut persuades material from the mating sheet to flow around the self-clinch groove and notches. They are designed to ensure the sheet is completely flush on the back and each size of nut can be installed into a large panel range. The steel nuts are hardened and designed to go into sheet less than 80 Rockwell B, the stainless version is designed to go into less than 70 Rockwell B. It is designed to be installed into drilled or punched holes and must always be installed using a squeeze action press.

## Dimensions

thread	A	shank	C	E	T	holesize	sheet thickness	min dis**
M2	0.76	4.20	6.3	1.5	4.25	0.8	4.8	
M2	0.97	1	4.20	6.3	1.5	4.25	1.0	4.8
M2	1.37	2	4.20	6.30	1.5	4.25	1.4	4.8
M2.5	0.76	4.20	6.3	1.5	4.25	0.8	4.8	
M2.5	0.97	1	4.20	6.3	1.5	4.25	1.0	4.8
M2.5	1.37	2	4.2	6.3	1.5	4.25	1.4	4.8
M3	0.76	4.20	6.30	1.5	4.25	0.8	4.8	
M3	0.97	1	4.20	6.30	1.5	4.25	1.0	4.8
M3	1.37	2	4.20	6.30	1.5	4.25	1.4	4.8
M3 (4.75)	0.76	4.75	7.1	1.75	4.75	0.8	5.6	
M3 (4.75)	0.97	1	4.75	7.10	1.75	4.75	1.0	5.6
M3 (4.75)	1.37	2	4.75	7.10	1.75	4.75	1.4	5.6
M4	0.76	5.40	7.90	2.0	5.4	0.8	6.9	
M4	0.97	1	5.40	7.90	2.0	5.4	1.0	6.9
M4	1.37	2	5.40	7.90	2.0	5.4	1.4	6.9
M4 (2.3)	0.76	5.40	7.90	2.3	5.4	0.8	6.9	
M4 (2.3)	0.97	1	5.40	7.90	2.3	5.4	1.0	6.9
M4 (2.3)	1.37	2	5.40	7.90	2.3	5.4	1.4	6.9
M5	0.76	6.40	8.70	2.0	6.4	0.8	7.1	
M5	0.97	1	6.40	8.70	2.0	6.4	1.0	7.1
M5	1.37	2	6.40	8.70	2.0	6.4	1.4	7.1
M5 (2.3)	0.76	6.40	8.70	2.3	6.4	0.8	7.1	
M5 (2.3)	0.97	1	6.40	8.70	2.3	6.4	1.0	7.1
M5 (2.3)	1.37	2	6.40	8.70	2.3	6.4	1.4	7.1
M6	1.37	1	8.75	11.05	4.1	8.75	1.4	8.6
M6	2.21	2	8.75	11.05	4.1	8.75	2.3	8.6
M8	1.37	1	10.50	12.65	5.5	10.5	1.4	9.7
M8	2.21	2	10.50	12.65	5.5	10.5	2.3	9.7
M10	2.21	1	14.00	17.30	7.5	14	2.3	11
M10	3.05	2	14.00	17.30	7.5	14	3.1	11

## Advantages

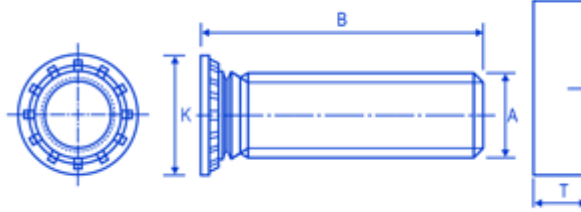
SUITABLE FOR USE IN DRILLED OR PUNCHED HOLES. REVERSE SIDE OF SHEET WILL BE COMPLETELY FLUSH.

## Comments

TO SPECIFY= FSUK M4-1- S (STEEL)-Z (TRIVALENT). PLEASE NOTE WE STOCK ALL BODY TYPE TO SUIT THE LARGER HOLE IN M3, FOR EXAMPLE M3 (4.75) AND ALSO THE THICKER DIMENSION T ON M4 AND M5 WHICH IS 2.3MM. PLEASE NOTE DIMENSION A IS A MAXIMUM THERE IS NO MINIMUM

## SCS: 5

### FSUK-SCS



## Dimensions

thread	K	L	T	sheet thickness
M2.5	4.0	2.5	0.4	1.0
M3	4.6	3.0	0.8	1.0
M4	5.9	4.0	1.9	1.0
M5	6.5	5.0	3.8	1.0
M6	8.2	6.0	8.0	1.5
M8	9.6	8.0	12.0	1.5

## Description

The FSUK Self-Clinch studs is designed to be flush into a range of sheet metal without any need for welding. The studs are available in a variety of thread sizes and lengths. The FSUK Self-Clinch studs persuades material from the mating sheet to flow around the self clinch groove and notches. The steel studs are hardened and designed to go into sheet less than 80 Rockwell B, the stainless version is designed to go into less than 70 Rockwell B. It is designed to be installed into drilled or punched holes and must always be installed using a squeeze action. The tolerance on the hole must be  $-0.00 + 0.08\text{mm}$

## Advantages

SUITABLE FOR USE IN DRILLED OR PUNCHED HOLES HEAD IS DESIGNED TO BE INSTALLED FLUSH WITH THE SHEET AVAILABLE IN STEEL AND STAINLESS STUD WILL ALWAYS BE INSTALLED PERPENDICULAR TO PANEL NO WELDING REQUIRED

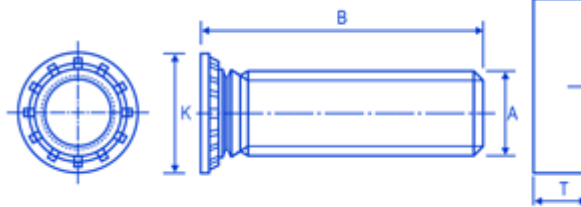
## Comments

HEAD TOLERANCE  $\pm 0.4\text{mm}$  HOW TO SPECIFY: THREAD SIZE X LENGTH STEEL TRIVALENT FINISH OR STAINLESS. IE FSUK M4-10 STEEL TRIVALENT PLEASE NOTE LENGTHS(B) AVAILABLE AS FOLLOWS: M3- 6/8/10/12/14/15/16/18/20/25/30/35 M4- 6/8/10/12/14/15/16/18/20/25/30/35/38 M5- 8/10/12/14/15/16/18/20/25/30/35/38 M6- 10/12/14/15/16/18/20/25/30/35/38 M8- 10/12/15/16/18/20/25/30/35/38/50 PLEASE CHECK WITH FSUK FOR AVAILABILITY OVER 30 LONG PRODUCT IS AVAILABLE IN STEEL TRIVALENT FINISH, GEOMET 500 (ONLY SOME SIZES) AND STAINLESS MOST SIZES EX STOCK



HPS: 5

FSUK-SCHPS



## Dimensions

thread	K	L	T	holesize
M5	7.8	5.0	10.5	5.0
M6	9.4	6.0	11.5	6.0
M8	12.5	8.0	12.5	8.0
M10	15.7	10.0	13.5	10.0

## Advantages

SUITABLE FOR USE IN DRILLED OR PUNCHED  
HOLES STUD WILL ALWAYS BE INSTALLED  
PERPENDICULAR TO PANEL NO WELDING  
REQUIRED HIGH TORQUE RESISTANCE

## Comments

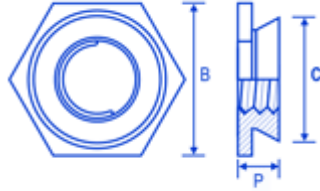
HOW TO SPECIFY: FSUK SCHPS M8-20 (B) STEEL  
TRIVALENT SOME SIZES AVAILABLE IN STAINLESS-  
PLEASE CLICK ON THE CONTACT US @ FSUK AND  
PLACE ENQUIRY TO CHECK AVAILABILITY

## Description

The FSUK high-performance studs are available for applications where a flush head is not required and a very high performance is. The FSUK Self-Clinch studs persuades material from the mating sheet to flow around the self clinch groove and notches. The steel studs are hardened and designed to go into sheet less than 80 Rockwell B. It is designed to be installed into drilled or punched holes and must always be installed using a squeeze action. The tolerance on the hole must be  $-0.00 + 0.13\text{mm}$ .

## FLUSH: 5

### FSUK-FLUSH



## Description

The FSUK Flush range provides a strong reusable thread in sheet metal with a flush finish on both sides. It is designed to be installed into drilled or punched holes and must always be installed using a squeeze action. The tolerance on the hole must be  $-0.00 + 0.13\text{mm}$ . The Nuts are manufactured from stainless steel and must be installed into sheet hardness of less than 70 Rockwell B.

## Dimensions

thread	shank	B	C	P	holesize	sheet thickness	min dis**
M2.5	1	4.8	4.35	1.5	4.4	1.5	6.0
M2.5	2	4.8	4.35	2.3	4.4	2.4	6.0
M3	1	4.8	4.35	1.5	4.4	1.5	6.0
M3	2	4.8	4.35	2.3	4.4	2.4	6.0
M3 (5.4)	1	6.4	5.35	1.5	5.4	1.5	6.5
M3 (5.4)	2	6.4	5.35	2.3	5.4	2.4	6.5
M3.5	1	6.4	5.35	1.5	5.4	1.5	6.5
M3.5	2	6.4	5.35	2.3	5.4	2.4	6.5
M4	1	7.9	7.35	1.5	7.4	1.5	7.2
M4	2	7.9	7.35	2.3	7.4	2.4	7.2
M5	1	8.7	7.90	1.5	7.9	1.5	8.8
M5	2	8.7	7.90	2.3	7.9	2.4	8.8
M6	1	9.5	8.75	3.1	8.75	3.2	8.8
M6	2	9.5	8.75	3.9	8.75	4.0	8.8

## Advantages

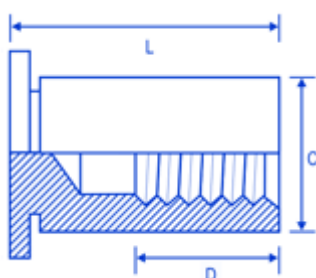
HIGH PULL OUT AND BODY TORQUE PROVIDES FLUSH FINISH TO BOTH SIDES OF THE SHEET

## Comments

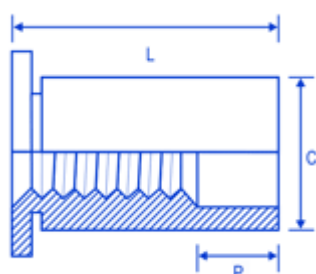
HOW TO SPECIFY: FSUK M4-1 FLUSH NUT ONLY AVAILABLE IN STAINLESS TO ENSURE STRONG INTERNAL THREAD

## STAND-OFFS: 5

### FSUK-BLIND



### FSUK-THROUGH



### Cross Flat



## Description

The FSUK Stand-Offs are designed to serve as spacers normally to mount a PCB board in enclosures. They are available in a Blind or Through version and can be supplied in steel or stainless. The steel version are hardened and designed to go into sheet less than 80 Rockwell B, the stainless version is designed to go into less than 70 Rockwell B. They are designed to be installed into drilled or punched holes and must always be installed using a squeeze action. The tolerance on the hole must be  $-0.00 + 0.08\text{mm}$ .

## Dimensions

thread	C	D	P	L	H A/F	holesize	sheet thickness	min dis**
M2.5	4.18	L6-12Max L14-16=6.4 18-26=9.5	L12-14=4.8 L16-20=8 L22-26=11	5-26	4.8	4.2	1.0 (min)	6.0
M3	4.18	L6-12Max L14-16=6.4 18-26=9.5	L12-14=4.8 L16-20=8 L22-26=11	5-26	4.8	4.2	1.0 (min)	6.0
M3 (5.4)	5.39	L6-12Max L14-16=6.4 18-26=9.5	L12-14=4.8 L16-20=8 L22-26=11	5-26	6.4	5.4	1.0 (min)	6.8
M4	7.10	L6-12Max L14-16=6.4 18-26=9.5	L12-14=4.8 L16-20=8 L22-26=11	6-26	7.9	7.2	1.3 (min)	8.0
M5	7.10	L6-12Max L14-16=6.4 18-26=9.5	L12-14=4.8 L16-20=8 L22-26=11	6-26	7.9	7.2	1.3 (min)	8.0

## Advantages

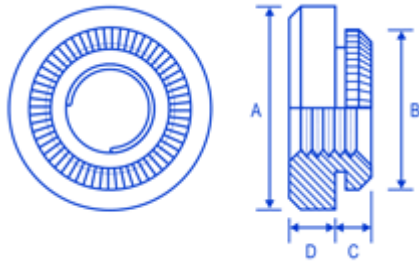
DESIGNED TO BE FLUSH ON ONE SIDE OF SHEET METAL  
OFFERED IN A WIDE RANGE OF LENGTHS SUITABLE FOR ALL  
THICKNESS OF SHEET OVER 1.0MM AVAILABLE IN THROUGH  
AND BLIND VERSIONS STEEL OR STAINLESS STEEL

## Comments

HOW TO SPECIFY FSUK BLD M4-12-S-TRIVALENT= M4-12  
BLIND STEEL TRIVALENT PLATED FSUK THROUGH M4-12 S-  
TRIVALENT= M4-12 THROUGH STEEL TRIVALENT PLATED  
ALSO AVAILABLE IN STAINLESS AND SOME SIZES IN GRADE  
400 STAINLESS PLEASE CHECK WITH FSUK FOR AVAILABILITY  
OF STAINLESS/GRADE 400 PLEASE NOTE LENGTH (L) STARTS  
AT 6MM ON FSUK-BLIND

## BROACH: 5

### FSUK-BROACH



## Dimensions

thread	A	B	C	D	L	A/F	holesize
M2.5	5.56	4.60	1.5	1.5	1.53	4.4	4.22
M3	5.56	4.60	1.5	1.5	1.53	4.4	4.22
M4	8.74	6.75	1.5	2.0	1.53	6.4	6.40
M5	9.53	7.30	1.5	3.0	1.53	7.1	6.90

## Advantages

SIMPLE PRESS IN INSTALLATION AVAILABLE IN STAND-OFFS  
DESIGNED NOT TO CRACK BRITTLE PCB'S

## Comments

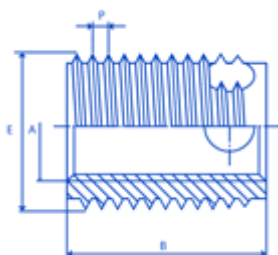
HOW TO SPECIFY: FSUK M3 BROACH-ET ET= ELECTRO  
TINNED FOR PCB BOARDS

## Description

The FSUK broaching nuts are designed to be installed into resin-based PCB Boards, they are installed using a flat punch with a squeeze action allowing the spigot to broach its way into the board. A stand-off version is also available. These nuts ensure a deep metal thread in the boards without the risk of cracking. They are designed to be installed into drilled or punched holes and must always be installed using a squeeze action. The tolerance on the hole must be  $-0.00 + 0.08\text{mm}$

## SCRS: 6

### FSUK-SCRS



## Description

The SCRS range is a Self Tapping range of inserts with internal and external threads and 3 holes to aid installation. It's designed to be installed into drilled or moulded holes generally for Thermosetting Plastics with up to 50% Glass Filled like Grivory. They are also an excellent insert to obtain a wear-free, vibration-resistant insert for Aluminium and Aluminium and Magnesium alloys. Can also be used in ThermoPlastics.

## Dimensions

thread	B	P	E	holesize	holesize 2
M5-7	7.0	1.0	8.0	7.4-7.6	7.6-7.7
M5-10	10.0	1.0	8.0	7.4-7.6	7.6-7.7
M6-8	8.0	1.25	10.0	9.3-9.5	9.5-9.6
M6-12	12.0	1.25	10.0	9.3-9.5	9.5-9.6
M8-9	9.0	1.5	12.0	11.1-11.3	11.3-11.5
M8-14	14.0	1.5	12.0	11.1-11.3	11.3-11.5
M10-10	10.0	1.5	14.0	13.1-13.3	13.3-13.5
M10-18	18.0	1.5	14.0	13.1-13.3	13.3-13.5
M12-12	12.0	1.75	16.0	15.0-15.2	15.2-15.4
M12-22	22.0	1.75	16.0	15.0-15.2	15.2-15.4
M14-14	14.0	2.0	18.0	17.0-17.2	17.2-17.4
M14-24	24.0	2.0	18.0	17.0-17.2	17.2-17.4
M16-14	14.0	2.0	20.0	19.0-19.2	19.2-19.4
M16-24	24.0	2.0	20.0	19.0-19.2	19.2-19.4

## Advantages

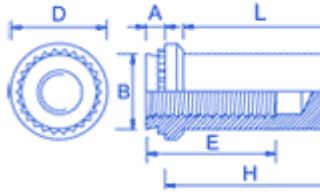
HIGH PULL OUT RESISTANCE DEVELOPED FOR MATERIALS WITH DIFFICULT CUTTING PROPERTIES THE INSERT HAS A THICK WALL AND THE CUTTING FORCE IS DISTRIBUTED OVER THREE CUTTING EDGES SHORTER VERSION AVAILABLE IN ALL SIZES WHERE MINIMAL MATERIAL THICKNESSES ARE INVOLVED GENERALLY SOLD IN HARDENED STEEL WITH A RoHS COMPLIANT ZINC AND CLEAR PASSIVATION

## Comments

TO SPECIFY SIMPLY SPECIFY THE INSERT TYPE - FSUK SCRS - AND THEN THE THREAD SIZE, LENGTH AND THEN FINISH FOR EXAMPLE, A M8-14 LONG WOULD BE FSUK SCRS M8-14-Z (Z= ZINC AND CLEAR PASS). ALSO AVAILABLE IN STAINLESS. M8, M10 AND M12 CURRENTLY STOCKED BUT MOST SIZES ARE AVAILABLE. PLEASE NOTE HOLESIZE 1 FOR PLASTIC AND HOLESIZE 2 FOR METAL. PLEASE NOTE THAT THE WALL THICKNESS WOULD BE TYPICALLY MINIMUM 0.3 X E ON THE SCRS. PLEASE NOTE DEPTH ON BLIND HOLE SHOULD BE 10% MIN OF DIM B FOR PLASTICS AND 15% MIN FOR METAL

## BNUTS: 5

### FSUK-BNUT



## Dimensions

thread	A	shank	B	C	D	E	H	L	holesize (+0.08mm-0.00)	sheet thickness	min dis*
M3	0.9 7	1	4.2 0	3.8 4	6.3 5	5. 3	9.6	8.5	4.22	1.0	4.8
M3	1.3 8	2	4.2 0	3.8 4	6.3 5	5. 3	9.6	8.5	4.22	1.4	4.8
M4	0.9 7	1	5.3 8	5.2	7.9 5	7. 1	11. 2	9.8	5.41	1.0	6.9
M4	1.3 8	2	5.3 8	5.2	7.9 5	7. 1	11. 2	9.8	5.41	1.4	6.9
M5	0.9 7	1	6.3 3	6.0 2	8.7 5	7. 1	11. 2	9.8	6.33	1.0	7.1
M5	1.3 8	2	6.3 3	6.0 2	8.7 5	7. 1	11. 2	9.8	6.35	1.4	7.1
M6	1.3 8	1	8.7 3	7.8	11. 1	7. 8	14. 3	12. 7	8.75	1.4	8.6
M6	2.2 1	2	8.7 3	7.8	11. 1	7. 8	14. 3	12. 7	8.75	2.29	8.6

## Description

The FSUK BNUT range has been designed to allow a Blind Self-Clinching Stand-off located on the inside of the panel to stop protrusion of screws and foreign objects. The steel version are hardened and designed to go into sheet less than 80 Rockwell B, the stainless version is designed to go into less than 70 Rockwell B. They are designed to be installed into drilled or punched holes and must always be installed using a squeeze action. The tolerance on the hole must be -0.00 + 0.08mm.

## Advantages

AVAILABLE IN M3-M6 THREAD SIZES SUITABLE FOR MATERIAL THICKNESS GREATER THAN 1.0MM AVAILABLE IN HEAT-TREATED CARBON STEEL ZINZ - CR3 AND 300 SERIES STAINLESS (PREFERRED)

## Comments

HOW TO SPECIFY: FSUK BNUT M6-2 S- Z FOR STEEL CR3 AND FSUK BNUT M6-2 STST FOR STAINLESS VERSION