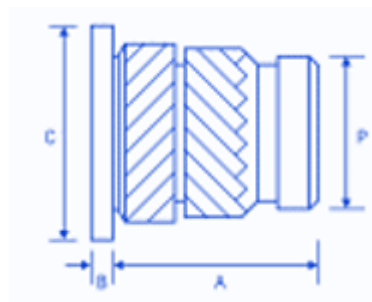
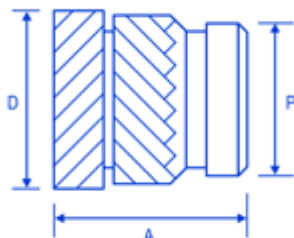


HISH: 1

FSUK-HISH



FSUK-HIS



Description

The HIS range of inserts has been developed with an opposing herringbone knurl on the outside to give a high level of performance in most Thermoplastics. This insert is available in a headed version to increase performance and aid with electrical contacts. It's designed to be installed into drilled or moulded holes using either direct heat or ultrasonic. The insert is designed with a pilot end to aid insertion.

Dimensions

thread	A	B	C	D	P	holesize (+0.1mm-0.0)	wall thickness
M2	4.0	0.53	4.8	3.6	3.1	3,2	1.3
M2.5	5.7	0.61	5.5	4.6	3.9	4.0	1.6
M3	5.7	0.61	5.5	4.6	3.9	4,0	1.6
M3.5	7.1	0.76	6.4	5.4	4.7	4.8	1.8
M4	8.2	0.91	7.1	6.3	5.5	5.6	2.1
M5	9.5	1.09	7.9	7.1	6.3	6.4	2.6
M6	12.7	1.35	9.5	8.7	7.9	8.0	3.3
M8	12.7	1.35	11.1	10.2	9.5	9.6	4.5
M10	12.7	1.35	14.0	12.3	11.6	11.7	6.0

Advantages

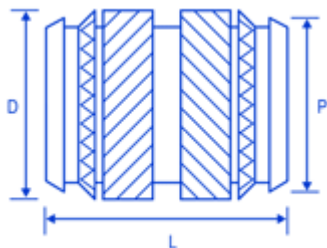
HIGH TORQUE AND PULL OUT SUITABLE FOR THIN BOSS WALLS TO MAXIMISE DESIGN SPACE HEADED VERSION FOR ELECTRICAL CONTACT AND HIGHER PERFORMANCE

Comments

DESIGN ALLOWS RAPID INSTALLATION USING HEAT OR ULTRASONICS NOW STOCKING NON STANDARD LENGTHS IN M3 UP TO M6 AND MALE THREADED VERSIONS EXAMPLE DESIGNATION : FSUK HIS-B-M3 UNHEADED FSUK HISH B M3 HEADED VERSION PLEASE NOTE HOLE SIZES APPLY TO THE POINT REACHED AT THE BOTTOM OF THE INSERT AVAILABLE IN BRASS + SOME SIZES IN STAINLESS MOST SIZES AVAILABLE FROM STOCK CONTACT FSUK FOR FURTHER INFO

DUO: 1

FSUK-DUO



Dimensions

thread	D	P	L	holesize (+0.1mm-0.0)	wall thickness
M2	3.5	3.1	3.9	3.2	1.3
M2.5	4.4	3.9	5.7	4.0	1.6
M3	4.4	3.9	5.7	4.0	1.6
M3.5	5.2	4.7	7.1	4.8	1.8
M4	6.1	5.5	8.1	5.6	2.1
M5	6.8	6.3	9.5	6.4	2.6
M6	8.5	7.9	12.7	8.0	3.3
M8	10.0	9.5	12.7	9.6	4.5
M10	12.3	11.8	12.7	11.9	6.0

Description

The Duo range is based on a opposing herringbone knurl with the advantage of it being symmetrical. It's designed to be installed into drilled or moulded holes using direct heat. (Not Ultrasonics)

Advantages

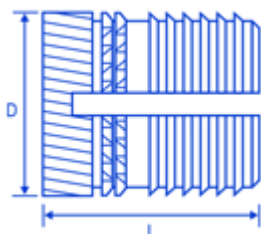
HIGH TORQUE AND PULL OUT SUITABLE FOR THIN BOSS WALLS TO MAXIMISE DESIGN SPACE DESIGN ALLOWS RAPID INSTALLATION USING HEAT AVAILABLE IN SHORTER LENGTHS SYMMETRICAL TO AID WITH INSTALLATION

Comments

EXAMPLE DESIGNATION: FSUK DUO B M3 M3 BRASS
VERSION PLEASE NOTE HOLE SIZES APPLY TO THE POINT REACHED AT THE BOTTOM OF THE INSERT ONLY AVAILABLE IN BRASS MOST SIZES EX STOCK

EXPP: 1

FSUK-EXPP



Description

The FSUK EXPP insert is a high-performance press in insert designed for Thermoplastics. It's designed to be pressed in cold into drilled or moulded holes. The insert has an anti vibration feature but without the high installation torque required with the EXP range.

Dimensions

thread	D	L	holesize (+0.1mm-0.0)	wall thickness
M2	3.7	4.0	3.2	1.6
M2.5	4.5	5.8	4.0	2.0
M3	4.5	5.8	4.0	2.0
M4	6.2	8.2	5.6	2.8
M5	6.9	9.5	6.4	3.2
M6	8.5	12.7	8.0	4.0
M8	10.1	12.7	9.6	4.8

Advantages

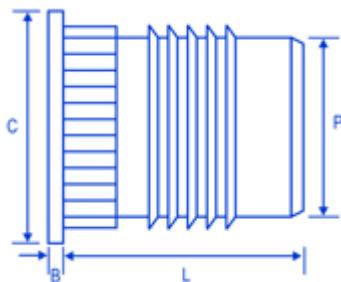
FAST AND EASY TO INSTALL WITHOUT THE NEED FOR HEAT
HIGH PERFORMANCE SUITABLE FOR THE MAJORITY OF
THERMOPLASTIC

Comments

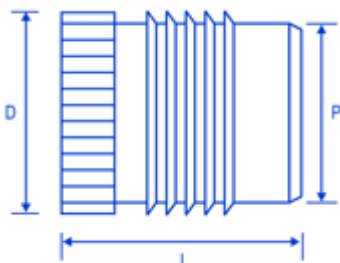
PLEASE NOTE HOLE SIZES APPLY TO THE POINT REACHED AT
THE BOTTOM OF THE INSERT EXAMPLE DESIGNATION: FSUK
EXPP B M3

PUH: 1

FSUK-PUH



FSUK-PU



Dimensions

thread	B	C	D	P	L	holesize (+0.1mm-0.0)	wall thickness
M2	0.45	4.8	3.7	3.1	4.0	3.2	1.6
M2.5	0.58	5.5	4.5	3.9	4.8	4.0	2.0
M3	0.58	5.5	4.5	3.9	4.8	4.0	2.0
M3.5	0.74	6.4	5.3	4.7	6.4	4.8	2.4
M4	0.89	7.1	6.1	5.5	7.9	5.6	2.8
M5	1.07	7.9	7.0	6.3	9.5	6.4	3.2
M6	1.32	9.5	8.6	7.9	12.7	8.0	4.0
M8	1.32	11.0	10.2	9.5	12.7	9.6	4.8

Advantages

FAST AND EASY TO INSTALL WITHOUT THE NEED FOR HEAT
HIGH PERFORMANCE SUITABLE FOR THE MAJORITY OF
THERMOPLASTICS FREE RUNNING THREAD HEADED VERSION
FOR ELECTRICAL CONTACT AND HIGHER PERFORMANCE

Comments

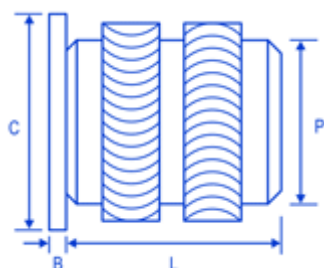
PLEASE NOTE HOLE SIZES APPLY TO THE POINT REACHED AT
THE BOTTOM OF THE INSERT

Description

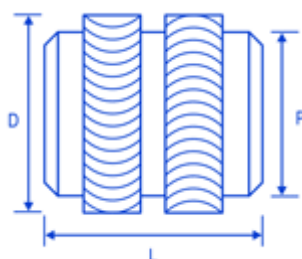
The FSUK PU insert is cold press in insert which is designed with a free running thread and will suit most types of Thermoplastics. It's designed to be pressed in cold into drilled or moulded holes and due to its combination of fins and knurls can achieve a high performance.

HIHLH: 1

FSUK-HIHLH



FSUK-HIHL



Description

The HIHL range has been designed with a rounded crest and knurl configuration to be installed into Notch Sensitive Plastics such as 30% Glass Filled Polycarbonate. This insert reduces the stress and is available in a headed version to increase performance and aid with electrical contacts. It's designed to be installed into drilled or moulded holes using direct heat and reduces the risks associated with cracking.

Dimensions

thread	B	C	D	P	L	holesize (+0.1mm-0.0)	wall thickness
M2	0.51	4.8	3.5	3.1	3.9	3.2	1.4
M2.5	0.58	5.5	4.4	3.9	5.8	4.0	1.8
M3	0.58	5.5	4.4	3.9	5.8	4.0	1.8
M3.5	0.74	6.4	5.2	4.7	7.1	4.8	2.1
M4	0.89	7.1	6.1	5.5	8.1	5.6	2.4
M5	1.07	7.9	6.9	6.3	9.5	6.4	2.8
M6	1.32	9.5	8.5	7.9	12.7	8.0	3.6
M8	1.32	11.1	10.0	9.5	12.7	9.6	5.0

Advantages

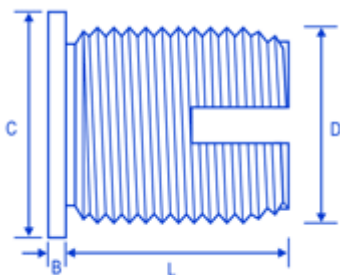
SYMMETRICAL TO AID WITH INSTALLATION DESIGNED TO REDUCE STRESS FOR USING WITH AMORPHOUS PLASTICS HEADED VERSION FOR ELECTRICAL CONTACT AND HIGHER PERFORMANCE

Comments

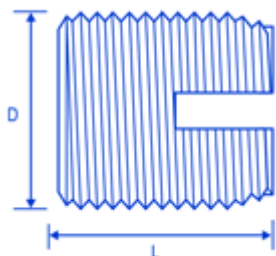
PLEASE NOTE HOLE SIZES APPLY TO THE POINT REACHED AT THE BOTTOM OF THE INSERT
EXAMPLE DESIGNATION: FSUK HIHL B M3 UNHEADED M3
FSUK HIHLH B M3 HEADED M3
ONLY AVAILABLE IN BRASS

SCRH: 1

FSUK-SCRH



FSUK-SCR



Description

The SCR range is a self tapping range of inserts with internal and external threads and a slot to aid installation. It's designed to be installed into drilled or moulded holes and can be used where maximum strength is required.

Dimensions

thread	B	C	D	L	holesize	holesize 2
M2.5	0.58	6.0	4.5	6.0	4.0 - 4.1	4.1 - 4.3
M3	0.58	6.5	5.0	6.0	4.5 - 4.6	4.6 - 4.8
M3.5	0.73	7.5	6.0	8.0	5.3 - 5.4	5.5 - 5.7
M4	0.89	8.0	6.5	8.0	5.8 - 5.9	6.0 - 6.2
M5	1.06	9.5	8.0	10.0	7.1 - 7.2	7.3 - 7.6
M6	1.32	12.0	10.0	14.0	8.6 - 8.8	9.0 - 9.4
M8	1.32	14.0	12.0	15.0	10.6 - 10.8	11.0 - 11.4
M10	1.57	16.0	14.0	18.0	12.6 - 12.8	13.0 - 13.4

Advantages

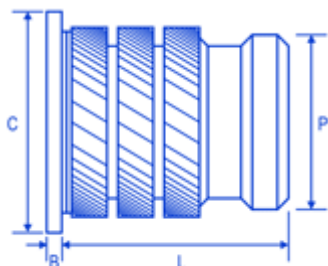
HIGH PULL OUT RESISTANCE HEADED VERSION FOR ELECTRICAL CONTACT AND HIGHER PERFORMANCE CAN BE USED IN MOST TYPES OF MATERIALS AVAILABLE IN HARDENED STEEL AND STAINLESS

Comments

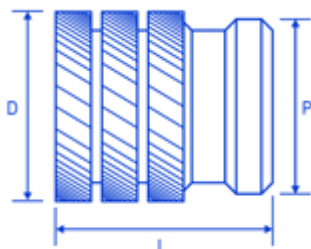
EXAMPLE DESIGNATION FSUK SCR B M3 FSUK SCRH B M3 (HEADED) AVAILABLE IN BRASS HARDENED STEEL AND STAINLESS STEEL PLEASE NOTE HOLE SIZE 1 IS A GUIDE FOR THERMOPLASTICS AND HOLESIZE 2 IS A GUIDE FOR THERMOSETTING PLASTICS CONTACT FSUK FOR FURTHER INFO IF REQUIRED PLEASE NOTE THAT THE WALL THICKNESS WOULD BE TYPICALLY MINIMUM 0.3 X D ON THE SCR THE SCRH RANGE STARTS FROM THREAD SIZE M4

MUH: 2

FSUK-MUH



FSUK-MU



Dimensions

thread	B	C	D	P	L	holesize (+0.1mm-0.0)	wall thickness
M2	0.51	4.8	3.3	3.0	4.1	3.1	1.6
M2.5	0.58	5.5	4.2	3.7	5.3	3.8	2.0
M3	0.58	5.5	4.2	3.7	5.3	3.8	2.0
M3.5	0.74	6.4	5.0	4.5	6.3	4.6	2.5
M4	0.80	7.1	5.8	5.3	7.4	5.4	2.5
M5	1.07	7.9	6.6	6.1	8.3	6.2	2.5
M6	1.32	9.5	8.2	7.7	9.2	7.8	2.8
M8	1.32	11.1	9.7	9.3	9.2	9.3	3.8
M10	1.57	14.0	12.0	11.5	9.2	11.6	5.0

Advantages

FAST AND EASY TO INSTALL A SPECIAL PILOT END PREVENTS INSTALLATION PROBLEMS RELATIVELY SMALL DIAMETER AND LENGTH HEADED VERSION FOR ELECTRICAL CONTACT AND HIGHER PERFORMANCE HIGH TORQUE RESISTANCE

Comments

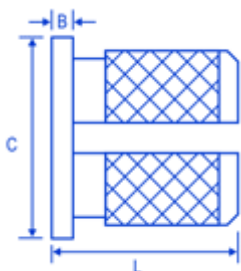
PLEASE NOTE HOLE SIZES APPLY TO THE POINT REACHED AT THE BOTTOM OF THE INSERT EXAMPLE DESIGNATION: FSUK MU B M3 SOME SIZES AVAILABLE IN STAINLESS

Description

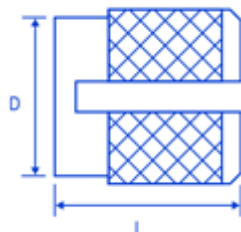
The FSUK MU range is designed with multiple helically knurled rings designed to be installed into hard brittle Thermosetting Plastics. These inserts are often used in the Electrical industry. It's designed to be installed cold into drilled or moulded holes. The sharp knurls allows high performance in thinner boses.

EXPH: 2

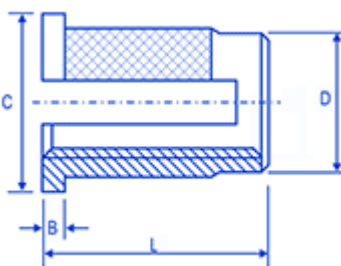
FSUK-EXPH



FSUK-EXP



FSUK-EXPR



Dimensions

thread	B	C	D	L	holesize (+0.1mm-0.0)	wall thickness
M2	0.43	4.8	3.2	3.9	3.2	2.4
M2.5	0.51	5.5	4.0	4.7	4.0	3.2
M3	0.51	5.5	4.0	4.7	4.0	3.2
M3.5	0.66	6.4	4.7	6.3	4.8	3.6
M4	0.82	7.1	5.5	7.9	5.6	4.0
M5	0.99	7.9	6.3	9.4	6.4	4.8
M6	1.25	9.5	7.9	12.6	8.0	6.0
M8	1.25	11.1	9.5	12.6	9.6	7.0

Advantages

FAST AND EASY TO INSTALL SCREW IS SECURED
AUTOMATICALLY AGAINST LOOSENING HEADED AND
REVERSE HEAD AVAILABLE TO ENABLE THE INSERT TO GO ON
THE BACK OF THE MOULDING

Comments

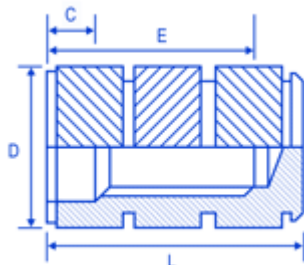
EXAMPLE DESIGNATION: FSUK EXP B M4= M4 BRASS FLUSH
EXPANSION INSERT FSUK EXPH-B-M4 M4 BRASS HEADED
VERSION FSUK EXPR B M4 M4 REVERSE TYPE EXPANSION
INSERT PLEASE NOTE HOLE SIZES APPLY TO THE POINT
REACHED AT THE BOTTOM OF THE INSERT ONLY AVAILABLE
IN BRASS MOST SIZES AVAILABLE FROM STOCK

Description

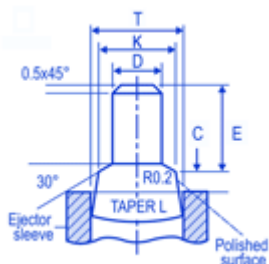
The FSUK EXP range is designed around a diamond knurl configuration with a slot which enables the insert to expand when the mating screw is assembled. This insert is designed more for Thermosetting Plastics although can be used in some Thermoplastics. Available in a headed and reverse head; it is designed with an anti-vibration feature to stop the screw working loose after assembly. It's designed to be pressed in cold into drilled or moulded holes.

BLD: 3

FSUK-BLD



Mould Pin



Description

The FSUK BLD range is a blind insert designed for moulding in rather than post insertion. The opposing herringbone knurl gives a very high level of performance. The location pin should be designed as per our dimensions to ensure the insert locates correctly during the moulding process.

Dimensions

thread	C	D	E	L
M2	1.2	3.4	3.6	5.5
M3	1.3	4.7	4.6	7.3
M4	1.8	6.3	6.7	10.2
M5	2.0	7.3	7.4	11.2
M6	2.0	9.8	8.1	14.4
M8	2.3	11.4	11.1	16.5

Advantages

BLIND ENDED TO AVOID ANY PLASTIC ENTERING THE INTERNAL THREAD CAN BE INSTALLED INTO VERY LARGE MOULDINGS VERY HIGH LEVEL OF PERFORMANCE FREE RUNNING THREAD MOST SIZES EX STOCK

Comments

MOULD PIN DESIGN IS CRITICAL TO THE SUCCESS OF THE MOULDING-IN OPERATIONS, SINCE THE FEATURES SHOWN ARE USED TO LOCATE AND RETAIN THE INSERT PRIOR TO MOULDING AND PREVENT THE INGRESS OF PLASTIC DURING THE PROCESS HOW TO SPECIFY: FSUK BLD B M5 ONLY AVAILABLE IN BRASS ALL STOCK SIZES