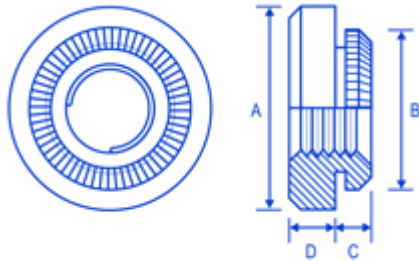


BROACH: 5

FSUK-BROACH



Dimensions

thread	A	B	C	D	L	A/F	holesize
M2.5	5.56	4.60	1.5	1.5	1.53	4.4	4.22
M3	5.56	4.60	1.5	1.5	1.53	4.4	4.22
M4	8.74	6.75	1.5	2.0	1.53	6.4	6.40
M5	9.53	7.30	1.5	3.0	1.53	7.1	6.90

Advantages

SIMPLE PRESS IN INSTALLATION AVAILABLE IN STAND-OFFS
DESIGNED NOT TO CRACK BRITTLE PCB'S

Comments

HOW TO SPECIFY: FSUK M3 BROACH-ET ET= ELECTRO
TINNED FOR PCB BOARDS

Description

The FSUK broaching nuts are designed to be installed into resin-based PCB Boards, they are installed using a flat punch with a squeeze action allowing the spigot to broach its way into the board. A stand-off version is also available. These nuts ensure a deep metal thread in the boards without the risk of cracking. They are designed to be installed into drilled or punched holes and must always be installed using a squeeze action. The tolerance on the hole must be $-0.00 + 0.08\text{mm}$