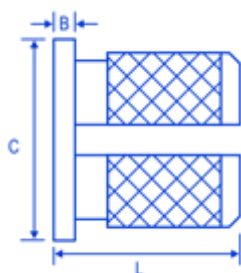
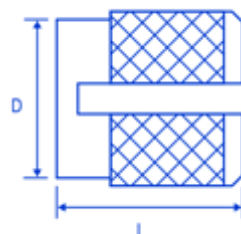


## EXPH: 2

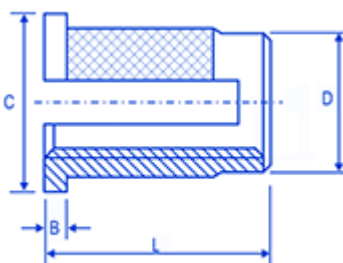
### FSUK-EXPH



### FSUK-EXP



### FSUK-EXPR



## Description

The FSUK EXP range is designed around a diamond knurl configuration with a slot which enables the insert to expand when the mating screw is assembled. This insert is designed more for Thermosetting Plastics although can be used in some Thermoplastics. Available in a headed and reverse head; it is designed with an anti-vibration feature to stop the screw working loose after assembly. It's designed to be pressed in cold into drilled or moulded holes.

## Dimensions

thread	B	C	D	L	holesize (+0.1mm-0.0)	wall thickness
M2	0.43	4.8	3.2	3.9	3.2	2.4
M2.5	0.51	5.5	4.0	4.7	4.0	3.2
M3	0.51	5.5	4.0	4.7	4.0	3.2
M3.5	0.66	6.4	4.7	6.3	4.8	3.6
M4	0.82	7.1	5.5	7.9	5.6	4.0
M5	0.99	7.9	6.3	9.4	6.4	4.8
M6	1.25	9.5	7.9	12.6	8.0	6.0
M8	1.25	11.1	9.5	12.6	9.6	7.0

## Advantages

FAST AND EASY TO INSTALL SCREW IS SECURED  
AUTOMATICALLY AGAINST LOOSENING HEADED AND  
REVERSE HEAD AVAILABLE TO ENABLE THE INSERT TO GO ON  
THE BACK OF THE MOULDING

## Comments

EXAMPLE DESIGNATION: FSUK EXP B M4= M4 BRASS FLUSH  
EXPANSION INSERT FSUK EXPH-B-M4 M4 BRASS HEADED  
VERSION FSUK EXPR B M4 M4 REVERSE TYPE EXPANSION  
INSERT PLEASE NOTE HOLE SIZES APPLY TO THE POINT  
REACHED AT THE BOTTOM OF THE INSERT ONLY AVAILABLE  
IN BRASS MOST SIZES AVAILABLE FROM STOCK