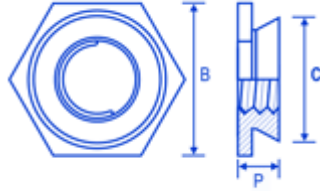


FLUSH: 5

FSUK-FLUSH



Description

The FSUK Flush range provides a strong reusable thread in sheet metal with a flush finish on both sides. It is designed to be installed into drilled or punched holes and must always be installed using a squeeze action. The tolerance on the hole must be $-0.00 + 0.13\text{mm}$. The Nuts are manufactured from stainless steel and must be installed into sheet hardness of less than 70 Rockwell B.

Dimensions

thread	shank	B	C	P	holesize	sheet thickness	min dis**
M2.5	1	4.8	4.35	1.5	4.4	1.5	6.0
M2.5	2	4.8	4.35	2.3	4.4	2.4	6.0
M3	1	4.8	4.35	1.5	4.4	1.5	6.0
M3	2	4.8	4.35	2.3	4.4	2.4	6.0
M3 (5.4)	1	6.4	5.35	1.5	5.4	1.5	6.5
M3 (5.4)	2	6.4	5.35	2.3	5.4	2.4	6.5
M3.5	1	6.4	5.35	1.5	5.4	1.5	6.5
M3.5	2	6.4	5.35	2.3	5.4	2.4	6.5
M4	1	7.9	7.35	1.5	7.4	1.5	7.2
M4	2	7.9	7.35	2.3	7.4	2.4	7.2
M5	1	8.7	7.90	1.5	7.9	1.5	8.8
M5	2	8.7	7.90	2.3	7.9	2.4	8.8
M6	1	9.5	8.75	3.1	8.75	3.2	8.8
M6	2	9.5	8.75	3.9	8.75	4.0	8.8

Advantages

HIGH PULL OUT AND BODY TORQUE PROVIDES FLUSH FINISH TO BOTH SIDES OF THE SHEET

Comments

HOW TO SPECIFY: FSUK M4-1 FLUSH NUT ONLY AVAILABLE IN STAINLESS TO ENSURE STRONG INTERNAL THREAD