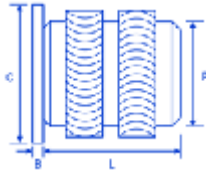
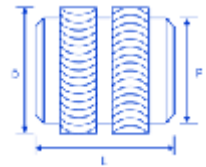


## HIHL: Inserts for Thermo Plastics

### FSUK-HIHLH



### FSUK-HIHL



## Dimensions

thread	B	C	D	P	L	H.Size	W.Thickness
M2	0,51	4,8	3,5	3,1	3.9	3,2	1,4
M2.5	0,58	5,5	4,4	3,9	5.8	4,0	1,8
M3	0,58	5,5	4,4	3,9	5.8	4,0	1,8
M3.5	0,74	6,4	5,2	4,7	7.1	4,8	2,1
M4	0,89	7,1	6,1	5,5	8.1	5,6	2,4
M5	1,07	7,9	6,9	6,3	9.5	6,4	2,8
M6	1,32	9,5	8,5	7,9	12.7	8,0	3,6
M8	1,32	11,1	10,0	9,5	12.7	9,6	5,0

## Advantages

SYMMETRICAL TO AID WITH INSTALLATION  
DESIGNED TO REDUCE STRESS FOR USING WITH AMORPHOUS PLASTICS  
HEADED VERSION FOR ELECTRICAL CONTACT AND HIGHER  
PERFORMANCE

## Comments

EXAMPLE DESIGNATION FSUK HIHL B M3 UNHEADED M3  
FSUK HIHLH B M3 HEADED M3  
ONLY AVAILABLE IN BRASS

## Description

The HIHL range has been designed with a rounded crest and knurl configuration to be installed into Notch Sensitive Plastics such as 30% Glass Filled Polycarbonate. This insert reduces the stress and is available in a headed version to increase performance and aid with Electrical contacts.

Its designed to be installed into drilled or moulded holes using direct heat and reduces the risks associated with cracking .