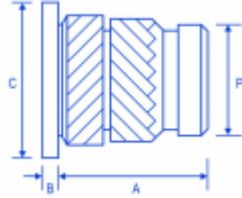
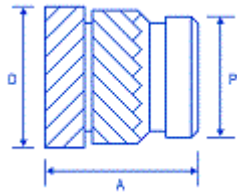


**HIS:**

**FSUK-HISH**



**FSUK-HIS**



**Dimensions**

thread	A	B	C	D	P	H.Size	W.Thickness
M2	4,0	0,53	4,8	3,6	3,1	3,2	1,3
M2.5	5,7	0,61	5,5	4,6	3,9	4,0	1,6
M3	5,7	0,61	5,5	4,6	3,9	4,0	1,6
M3.5	7,1	0,76	6,4	5,4	4,7	4,8	1,8
M4	8,2	0,91	7,1	6,3	5,5	5,6	2,1
M5	9,5	1,09	7,9	7,1	6,3	6,4	2,6
M6	12,7	1,35	9,5	8,7	7,9	8,0	3,3
M8	12,7	1,35	11,1	10,2	9,5	9,6	4,5
M10	12,7	1,60	14,0	12,3	11,6	11,7	6,0

**Advantages**

- HIGH TORQUE AND PULL OUT
- SUITABLE FOR THIN BOSS WALLS TO MAXIMISE DESIGN SPACE
- HEADED VERSION FOR ELECTRICAL CONTACT AND HIGHER PERFORMANCE

**Comments**

- DESIGN ALLOWS RAPID INSTALLATION USING HEAT OR ULTRASONICS AVAILABLE IN SHORTER LENGTHS AND WITH MALE THREADED VERSIONS
- DESIGNATION EXAMPLE: FSUK HIS-B-M3 UNHEADED
- FSUK HISH B M3 HEADED VERSION
- AVAILABLE IN BRASS + SOME SIZES IN STAINLESS
- MOST SIZES AVAILABLE FROM STOCK
- CONTACT FSUK FOR FURTHER INFO

**Description**

The HIS range of inserts has been developed with an opposing herringbone knurl on the outside to give a high level of performance in most Thermoplastics. This insert is available in a headed version to increase performance and aid with Electrical contacts.

Its designed to be installed into drilled or moulded holes using either direct heat or ultrasonic. The insert is designed with a pilot end to aid insertion.