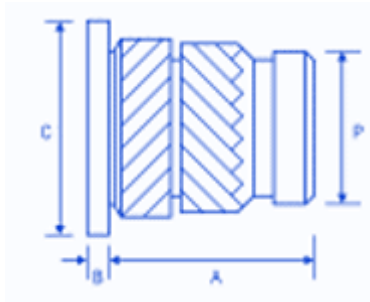
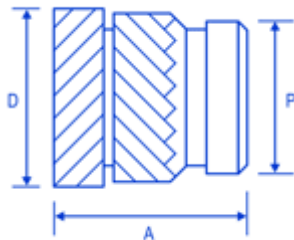


## HISH: 1

### FSUK-HISH



### FSUK-HIS



## Dimensions

thread	A	B	C	D	P	holesize (+0.1mm-0.0)	wall thickness
M2	4.0	0.53	4.8	3.6	3.1	3,2	1.3
M2.5	5.7	0.61	5.5	4.6	3.9	4.0	1.6
M3	5.7	0.61	5.5	4.6	3.9	4,0	1.6
M3.5	7.1	0.76	6.4	5.4	4.7	4.8	1.8
M4	8.2	0.91	7.1	6.3	5.5	5.6	2.1
M5	9.5	1.09	7.9	7.1	6.3	6.4	2.6
M6	12.7	1.35	9.5	8.7	7.9	8.0	3.3
M8	12.7	1.35	11.1	10.2	9.5	9.6	4.5
M10	12.7	1.35	14.0	12.3	11.6	11.7	6.0

## Advantages

HIGH TORQUE AND PULL OUT SUITABLE FOR THIN BOSS WALLS TO MAXIMISE DESIGN SPACE HEADED VERSION FOR ELECTRICAL CONTACT AND HIGHER PERFORMANCE

## Comments

DESIGN ALLOWS RAPID INSTALLATION USING HEAT OR ULTRASONICS NOW STOCKING NON STANDARD LENGTHS IN M3 UP TO M6 AND MALE THREADED VERSIONS EXAMPLE DESIGNATION : FSUK HIS-B-M3 UNHEADED FSUK HISH B M3 HEADED VERSION PLEASE NOTE HOLE SIZES APPLY TO THE POINT REACHED AT THE BOTTOM OF THE INSERT AVAILABLE IN BRASS + SOME SIZES IN STAINLESS MOST SIZES AVAILABLE FROM STOCK CONTACT FSUK FOR FURTHER INFO

## Description

The HIS range of inserts has been developed with an opposing herringbone knurl on the outside to give a high level of performance in most Thermoplastics. This insert is available in a headed version to increase performance and aid with electrical contacts. It's designed to be installed into drilled or moulded holes using either direct heat or ultrasonic. The insert is designed with a pilot end to aid insertion.