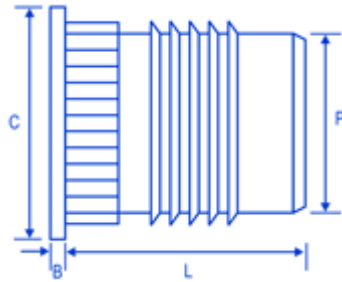
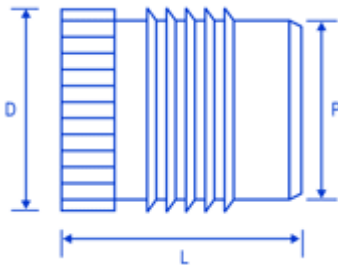


PUH: 1

FSUK-PUH



FSUK-PU



Dimensions

thread	B	C	D	P	L	holesize (+0.1mm-0.0)	wall thickness
M2	0.45	4.8	3.7	3.1	4.0	3.2	1.6
M2.5	0.58	5.5	4.5	3.9	4.8	4.0	2.0
M3	0.58	5.5	4.5	3.9	4.8	4.0	2.0
M3.5	0.74	6.4	5.3	4.7	6.4	4.8	2.4
M4	0.89	7.1	6.1	5.5	7.9	5.6	2.8
M5	1.07	7.9	7.0	6.3	9.5	6.4	3.2
M6	1.32	9.5	8.6	7.9	12.7	8.0	4.0
M8	1.32	11.0	10.2	9.5	12.7	9.6	4.8

Advantages

FAST AND EASY TO INSTALL WITHOUT THE NEED FOR HEAT
 HIGH PERFORMANCE SUITABLE FOR THE MAJORITY OF THERMOPLASTICS
 FREE RUNNING THREAD HEADED VERSION FOR ELECTRICAL CONTACT AND HIGHER PERFORMANCE

Comments

PLEASE NOTE HOLE SIZES APPLY TO THE POINT REACHED AT THE BOTTOM OF THE INSERT

Description

The FSUK PU insert is cold press in insert which is designed with a free running thread and will suit most types of Thermoplastics. It's designed to be pressed in cold into drilled or moulded holes and due to its combination of fins and knurls can achieve a high performance.